

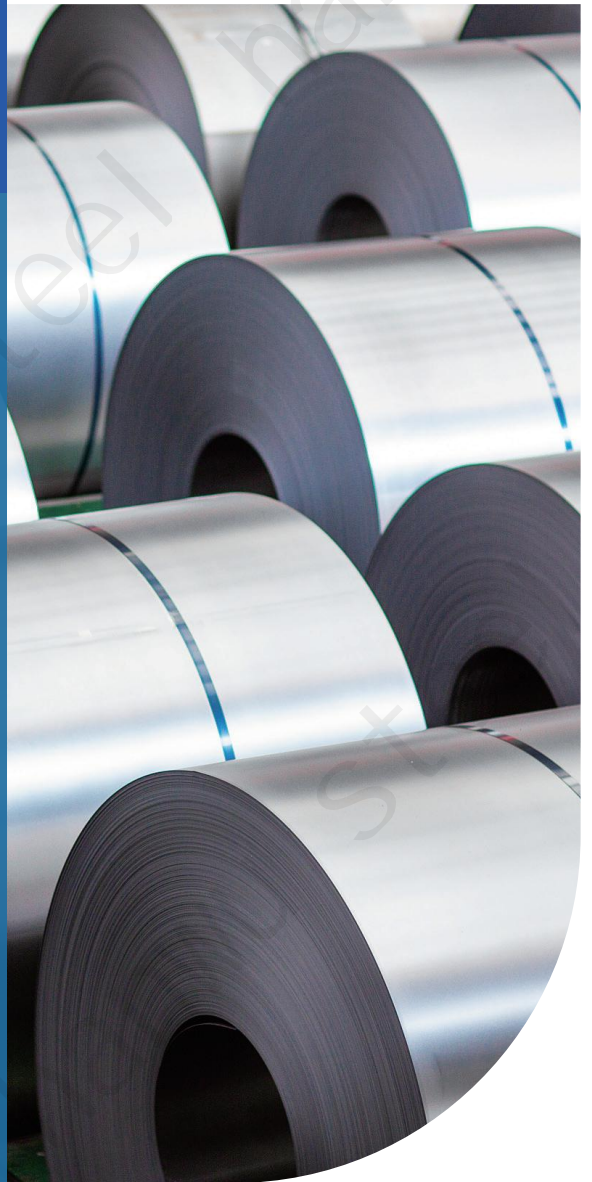


汉武钢铁

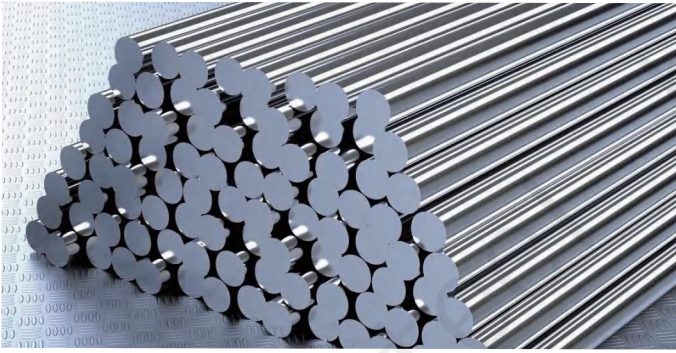
HANWU STEEL

ALLOY STEEL

- Hastelloy
- Inconel
- Incoloy
- Monel
- Titanium
- Nickel



Hastelloy



Common Alloy	W.Nr.	UNS
Hastelloy C-276	2.4819	N10276
Hastelloy C-22	2.4602	N06022
Hastelloy B2	2.4617	N10665
Hastelloy B3	2.4600	N01675
Hastelloy X	2.4655	N06002
Hastelloy C-4	2.4610	N06455

Standard: ASTM B575 (sheet), ASTM B619, ASTM B622, ASTM B626 (pipe), ASTM B574 (bar), ASTM B366 (fitting), etc.

Incoloy



Common Alloy	W.Nr.	UNS
Incoloy 800	1.4876	N08800
Incoloy 800H	1.4958	N06022
Incoloy 800HT	1.4959	N08811
Incoloy 825	2.4858	N01675
Incoloy 925	2.4858	N09925
Incoloy DS	1.4862	-

Standard: ASTM B409 / B514 / B751 / B163 / B407, ASME N-20, BS 3074NA15, ASTM A240/A480, ASME SA 480, etc.

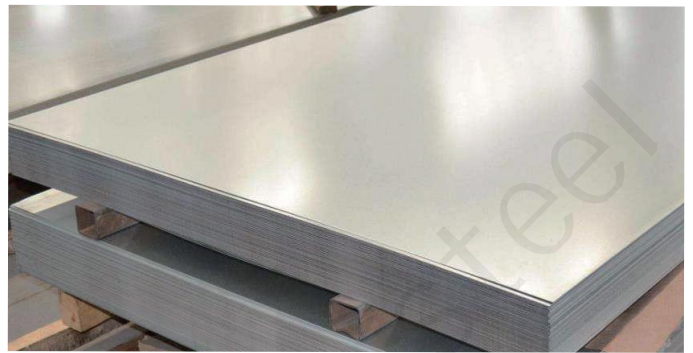
Inconel



Common Alloy	W.Nr.	UNS
Inconel 600	2.4816	N06600
Inconel 601	2.4851	N06601
Inconel 625	2.4856	N06625
Inconel 718	1.4668	N07718
Inconel X-750	2.4669	N07750
Inconel 740H	2.4610	N07740
Inconel 690	2.4642	N06690
Inconel 725	/	N07725
Inconel 706	/	N09706

Standard: ASTM B348A/B26 /B337/338, ASTM F136, ASTM F67, AMS4928, etc.

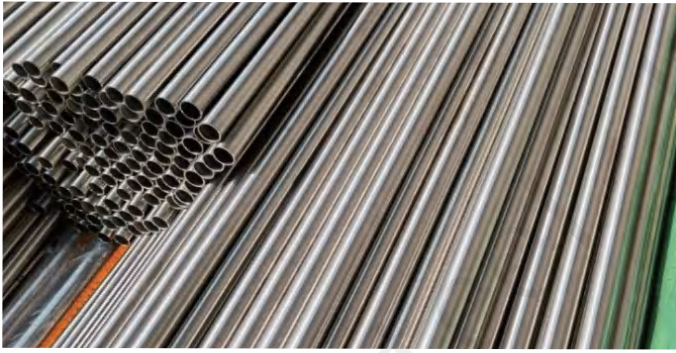
Titanium



GB	Chemical Formula	USA
TA1-4	Pure Titanium	Grade 1-4
TC4	Ti-6AL-4V	Grade 5
TA7	Ti-5AL-2.5Sn	Grade 6
TA9	Ti-0.2Pd	Grade 7
TA9-1	Ti-0.2Pd	Grade 11
TA10	Ti 3Al 2.5	Grade 12
TA18	Ti-3AL-2.5V	Grade 9
TA8	Ti-0.05Pd	Grade 16
TC4ELI	Ti 6AL-4V ELI	Grade 23

Standard: ASTM / ASME SB 168, ASTM / ASME SB 424 , ASTM / ASME SB 443, etc.

Monel



Common Alloy	W.Nr.	UNS
Monel 400	2.4360	N04400
Monel R-405	2.4363	N04405
Monel K-500	2.4375	N05500

Standard: ASTM B164 (bar/thread), ASTM B564 (forging), ASTM B127 (plate/belt), ASTM B165 (pipe), etc.

Nickel



Common Alloy	W.Nr.	UNS
Nickel 200	2.4066	N02200
Nickel 201	2.4068	N02201
Nickel 270	2.4050	N02270

Standard: ASTM B163, ASTM B407, ASTM B444, ASTM B751, etc.

Alloy Sheet



Thickness

0.1-400mm / 0.003"- 15.74"

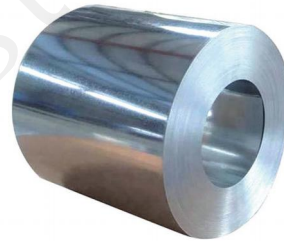
Width

20-3000mm / 0.78"- 118"

Length

1-12m / 39"- 472"

Alloy Coil



Thickness

0.1-400mm / 0.003"- 15.74"

Width

20-3000mm / 0.78"- 118"

Coil ID

508, 610mm / 20", 24"

Alloy Pipe



Wall Thickness

0.3-50mm / 0.011"- 1.96"

Outside Diameter

3-250mm / 0.11"- 9.84"

Shape

Round, Square, Rectangle, etc.

Alloy Bar



Diameter

0.1-500mm / 0.003"-19.68"

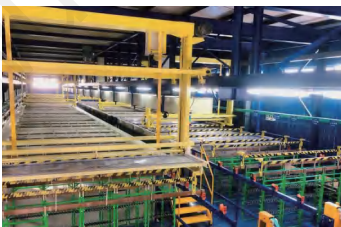
Length

1-12m / 39"- 472"

Shape

Round, Square, Flat Steel, etc.

PRODUCTION & TESTING



Production Line



Production Line



Product Inspection



Product Inspection



PRODUCT PACKAGING

Standard Export Seaworthy Package (Waterproof paper, and steel strip packed). Suit for all kinds of transport, or as required. Every cartons loaded with good shoring and strengthening. Use 6m loaded by 20ft container, 12m loaded by 40ft container. We will take container loading pictures and seal the container. Transportation speed is quick. And keep customer eachstep informed.



汉武钢铁

HANWU STEEL

Hanwu Iron and Steel (Shandong) Co., Ltd.

✉ cecilia@hw-steel.com

☎ +86 13075358905

🌐 hanwu-metal.com

📍 Building 1, Zhongjian Jinxiu Plaza,
Huaiyin District, Jinan City, Shandong
Province

